

The flood map for the selected area is number **23009C0732D**, effective on **7/20/2016**

### DYNAMIC MAP



### MAP IMAGE

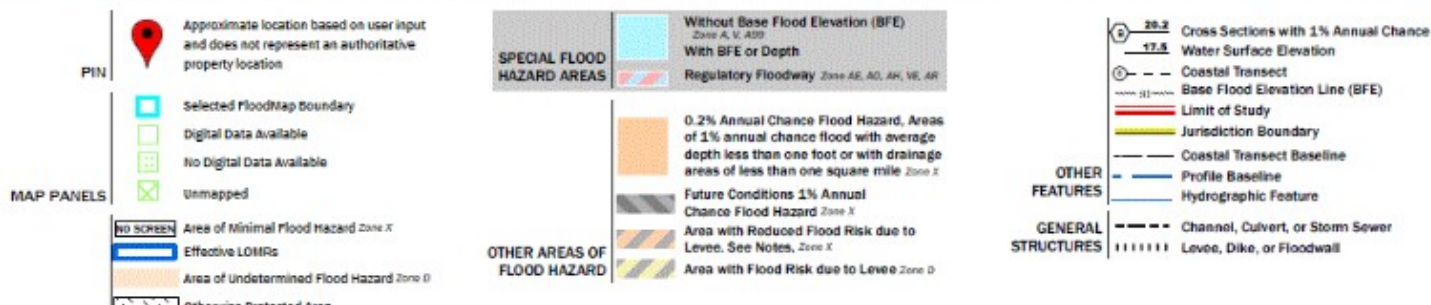


### Changes to this FIRM ?

- Revisions (1)
- Amendments (0)
- Revalidations (0)

You can choose a new flood map or move the location pin by selecting a different location on the locator map below or by entering a new location in the search field above. It may take a minute or more during peak hours to generate a dynamic FIRMette.

[Go To NFHL Viewer »](#)



Initial